

RDC HARDWARE TROUBLESHOOTING GUIDE



**Independent
Bank**

ibtx.com

RAISING STANDARDS TOGETHER



Member FDIC  Equal Housing Lender

LICENSE TERMS FOR JACK HENRY/ENTERPRISE PAYMENT SOLUTIONS WHITE LABEL MATERIALS

Jack Henry & Associates, Inc., acting through its ProfitStars division ("JHA"), by providing documentation to you the licensee ("You") for private labeling (the "Materials"), grants a limited license (the "License") to You to publish and distribute the Materials under Your private label, solely in connection with Your promotion, marketing, and support to Your customers of the applicable JHA solutions purchased and/or licensed by You from JHA. Your use of the Materials indicates your acceptance of the terms of this License.

This License does not convey any rights to alter the content of the Materials other than to apply Your private labels.

The Materials covered by this License include only items that are provided to You in a word processing format appropriate for revision; such items do not include files provided in the secured portable document format (PDF). All other documentation and materials provided to You by JHA are not covered by this License and may not be altered or privately labeled by You without JHA's prior written permission.

JHA retains all ownership rights to the Materials, including, but not limited to, in accordance with U.S. Code Title 17—Copyrights. Accordingly, You have no rights with regard to the Materials other than those rights specifically granted to You under this License. Without limiting the generality of the foregoing, JHA reserves the right to:

(a) require You to cease publication, distribution, and use of any Materials that JHA determines in its sole discretion can no longer be used due to content-related issues, including, but not limited to, outdated and inaccurate content;

(b) create new versions of the Materials and require You to replace prior versions of the Materials with the new versions;

(c) create derivatives of, or new versions of, the Materials without Your private labels for publication elsewhere without notifying You or obtaining Your permission; and

(d) monitor Your publication, distribution, and use of the Materials for compliance with the terms of this License, and take any action deemed necessary by JHA in its sole discretion to stop and/or remedy any conduct by You that violates the terms of this License, including, but not limited to, revoking the rights granted herein.

Nothing contained herein shall be construed as creating any agency, legal representative, partnership, or other form of joint enterprise between You and JHA, and neither You nor JHA shall have the authority to contract for or bind the other in any matter.

JHA warrants that it owns all copyright and other proprietary rights to the Materials, that JHA is authorized to grant the rights granted to You under this License. EXCEPT FOR THE FOREGOING WARRANTIES, JHA MAKES NO OTHER REPRESENTATIONS OR WARRANTIES OF ANY KIND, NATURE, OR DESCRIPTION, EXPRESS OR IMPLIED, WITH RESPECT TO THE MATERIALS, INCLUDING, BUT NOT LIMITED TO, ANY WARRANTY OF MERCHANTABILITY OR FITNESS FOR A PARTICULAR PURPOSE, OR AS TO THE RESULTS TO BE OBTAINED BY YOU AS A RESULT OF YOUR USE OF THE MATERIALS IN YOUR BUSINESS, AND JHA HEREBY DISCLAIMS THE SAME.

The terms of this License apply to all Materials in Your possession or control now and in the future.

Printed in the United States of America.

No part of this document may be copied, reproduced, stored in a retrieval system, displayed, distributed or transmitted in any form or any means whatsoever (electronic, mechanical or otherwise), including by photocopying or recording for any purpose, without the prior written permission of Jack Henry & Associates, Inc. Making unauthorized copies of this document for any purpose other than your own personal use is a violation of United States copyright laws.

Any unauthorized use of Jack Henry & Associates, Inc.'s trademarks and service marks is strictly prohibited. The following marks are registered and unregistered trademarks and service marks of Jack Henry & Associates, Inc.:

3rd Party Sweep™; 4|sight™; AccountAssist™; Account Analysis™; Account Cross Sell™; Account Cross Sell Jumpstart™; Account Number Change™; ACHiCheck Conversion Services™; ACH Client™; ACH Manager™; ACH Origination/Processing™; Advanced Card Processing Solutions Portal™; Advanced Reporting for Credit Unions™; AlertCenter™; AlertManager™; AllAccess™; Annual Disclosure Statement Online™; ArgoKeys®; ArgoKeys® Branch Sales Automation™; ArgoKeys® DepositKeys™; ArgoKeys® LendingKeys™; ArgoKeys® RelationshipKeys™; ATM Manager Pro®; ATM Manager Pro® – Asset & Site Management™; ATM Manager Pro® – Cash Management™; ATM Manager Pro® – Event Management™; ATM Manager Pro® – Financial Management™; AudioTel™; Banno Apps™; Banno CMS™; Banno Content™; Banno Marketing™; Banno Marketing PS™; Banno Mobile™; Banno Mobile PS™; Banno Monitor™; Banno Online™; Banno People™; Banno People PS™; Banno Platform™; Banno Reports™; Banno Reports PS™; Banno Settings™; Banno Settings PS™; Banno Support™; Banno Support PS™; Basel Report Pro™; BladeCenter™; Branch Anywhere™; Branch Deposit Reporting Pro™; Brand Management Services™; BusinessManager®; Call Report Pro™; Call Report Pro CU™; Card Holder Controls and Alerts™; Card Processing Solutions™; Card Processing Solutions Companion App™; Card Processing Solutions Credit™; Card Processing Solutions Debit™; Centurion Business Continuity Planning™; Centurion Business Recovery Consulting Group™; Centurion Co-Location™; Centurion Disaster Recovery®; Centurion Emergency Notification™; Centurion Enterprise-Level Recovery™; Centurion Episys Hosted Failover™; Centurion Hosted High Availability™; Centurion LiveVault™; Check 21 Cash Letter™; Check 21 Exception Processing™; CheckCollectPlus™; Check Collect Recovery Services™; Check Writer for Core Director®; CIF 20/20®; CIF 20/20® Teller™; CIF 20/20® Teller Capture™; CIF 20/20® Teller Offline™; Collateral and Document Tracking™; Commercial Lending Add-On Services™; Commercial Lending BusinessCenter™; Commercial Lending Center Suite™; Commercial Lending DecisionCenter™; Commercial Lending FinancialCenter™; Commercial Lending Funding Solutions™; Commercial Lending Management System™; Core Director®; Core Director® Teller™; Core Director® Teller Capture™; CPS Fraud Advisory Services™; Cruise®; CruiseNet®; CruiseNet® Account Alerts™; CruiseNet® Mobile CU™; CruiseNet® Mortgage Statement Extract™; CruiseNet® Multi-Currency™; CruiseNet® Relationship Pricing™; CUPRO® ALM™; CUPRO® ALM Express™; DataLink CU™; Demand Account Reclassification™; DIME™ (Document Image Management Engagement); DirectLine International™; DirectLine Wires™; Dynamic Content Modules™; ECS Capture Solutions™; ECS Digital Data Conversion™; ECS OneLook™; ECS Paper-to-Digital Conversion™; ECS RDC Conversion™; ECS Web™; eCTR™; Enhanced Account Analysis™; Enhanced Loan Application™ (ELA); Enhanced Loan Collections™; Enhanced Member Application™ (EMA); Enterprise Backup and Tape Encryption™; Enterprise Capture Solutions™; Enterprise Conversion Solutions™; Enterprise Payment Solutions™; Episys®; Episys® Anywhere™; Episys® Check Ordering Interface™; Episys® Collateral and Document Tracking™; Episys® Collection Toolkit™; Episys® Contact Event Manager™; Episys® Continuity Plan™ (ECP); Episys® Continuity Services™; Episys® Continuity Services Plus™; Episys® Data Store™; Episys® Dealer Reserve Accounting™; Episys® Escrow Module™; Episys® External Loan Processing Interface™; Episys® Failover Certification™; Episys® Failover Self-Certification™; Episys® ID Scanner Interface™; Episys® ID Scoring Integration™; Episys® Identity and Sanction Screening Integration™; Episys® Identity Q&A Integration™; Episys® Management Server™; Episys® Monitoring™; Episys® Multihost™; Episys® OFAC and Identity Score Integration™; Episys® OFAC Integration™; Episys® Overdraw Tolerance™; Episys® PowerCheckUp™; Episys® Quest™; Episys® Real Time External Loan Interface™; Episys® Replication Failover™; Episys® Skip Payment™; Episys® University™; Episys® Vaulting™; Episys® Virtualization™; EPS Remote Deposit Capture™; Extra Awards®; FactorSoft®; Fed-File Pro™; FlexPass™; First PIN™; FormSmart™; Genesys Check Imaging Suite™; Gladiator®; Gladiator® Advanced Malware Protection™; Gladiator® Consulting Services™; Gladiator® CoreDEFENSE Managed Security Services™; Gladiator® eBanking Compliance Services™; Gladiator® eCommercial SAT™; Gladiator® Enterprise Network Design, Implementation & Support Services™; Gladiator® Enterprise Security Monitoring™; Gladiator® Enterprise Virtualization Services™; Gladiator® Enterprise Vulnerability Scanning™; Gladiator® eSAT™; Gladiator® eShield™; Gladiator® Help Desk Service™; Gladiator® Hosted Network Solutions™; Gladiator® Incident Alert™; Gladiator® IT Regulatory Compliance/Policy Products™; Gladiator® Managed IT Services™; Gladiator® Managed Unified Communications Services™; Gladiator® NetTeller® Enterprise Security Monitoring™; Gladiator® Network Services™; Gladiator® Phishing Defense and Response Service™; Gladiator® Social Media Compliance Services™; Gladiator Technology®; Gladiator® Unified Communications Services™; Gladiator® Virtual Information Security Officer™; Gladiator® Website Compliance Review™; goDough®; GoldPass™; Hosted Pay Page™; iBizManager™; ImageCenter™; ImageCenter ATM Deposit Management™; ImageCenter Express™; ImageCenter Image Capture™; ImageCenter Interactive Teller Capture™; InTouch Voice Response®; iPay Business Bill Pay™; iPay Check Printing™; iPay Consumer Bill Pay™; iPay QuickPay™; iPay Solutions™; iTalk™; Jack Henry & Associates, Inc.®; Jack Henry Banking®; JHA Cash Automation™; JHA Client Services™; JHA Client Services Consulting™; JHA Commercial Cash Management™; JHA Compliance Access™; JHA Consumer Pieces™; JHA Customer Payment Portal™; JHA Electronic Statements™; JHA Electronic Statements – Interactive™; JHA EMV™; JHA Enterprise Risk Mitigation Solutions™; JHA EPS SmartPay Biller Direct™; JHA EPS SmartPay Business™; JHA EPS SmartPay Express™; JHA Failover™; JHA Get Smart™; JHA Hosted ATM Driving™; JHA Image ATM™; JHA Image ATM Capture and Reconciliation™; JHA Investor Servicing™; JHA Marketplace™; JHA Merchant Services™; JHA Money Center™; JHA mRDC™; JHA Multifactor Authentication™; JHA Online Financial Management™; JHA OutLink Processing Services™; JHA Payment Solutions™; JHA Payment Processing Solutions™; JHA Prepaid Cards™; JHA Professional Consulting Services™; JHA Program Management Services™; JHA Real Time™; JHA Shared Branch™; JHA Small Business Cash Management™; JHA Sweep Account Processing™; JHA Tokenization™; JHA Treasury Management™; JHA Website Design & Hosting™; JHA Website Security Services™; jhaAddress Verify™; jhaCall Center™; jhaCall Center In-House™; jhaCall Center Outsourced Services™; jhaCall Center Outsourced Services After Hours™; jhaCall Center Outsourced Full Business Services™; jhaCall Center Outsourced Select Services™; jhaDirect®; jhaEnterprise Notifications System™; jhaEnterprise Workflow™; jhaID Scan™; jhaKnow™; jhaKnow Express™; jhaPassPort Debit Optimizer™; jhaPassPort™; jhaPassPort Pro™; jhaPassPort Direct™; jhaPassPort Fraud Center™; jhaPassPort Hot Card Center™; jhaPassPort Promotions and Consulting Services™; jhaPassPort Switch™; jhaArchive™; jVault®; jXchange™; Know-It-All Credit Programs™; Know-It-All Education™; Know-It-All Learning Management Portal™; Know-It-All Now™; Landlord/Tenant Security Deposit Tracking™; LendingNetwork®; Loan Collateral Tracking™; Margin Maximizer Interactive™; Margin Maximizer MaxConnect™; Margin Maximizer Pronto™; Margin Maximizer Suite®; Masterlink™; MaxConnect Interactive™; MedCashManager®; Mutual Fund Sweep™; Net.Check™; Net.Teller®; Net.Teller® Bill Pay™; Net.Teller® Cash Management™; Net.Teller® MemberConnect™; Net.Teller® Online Banking™; Net.Teller® Security Manager™; Net.Teller® Text Alerts™; Net.Teller® Vanity URL™; Net.Teller® Vanity URL.bank™; OFX Gateway™; OnBoard Deposits™; OnBoard Loans™; OnNet™; OnTarget™; Opening Act™; Opening Act Express™; Optimizer™; Optimus Credit Union™; Participation Lending™; PIN Change Service™; Point™; PointMobility™; PowerOn®; PowerOn2™; PowerOn Marketplace®; PowerOn® Studio™; PROFITability®; Organizational PROFITability® Analysis System™; Product PROFITability® Analysis System™; PROFITability® Budget™; PROFITability® Reporting Service™; PROFITstar®; PROFITstar® ALM Budgeting™; PROFITstar® Budget™; PROFITstar® Classic™; PROFITstar® Reporting Service™; ProfitStars®; ProfitStars® CECL Analysis and Reporting™; ProfitStars® CECL DataStore and Validation™; ProfitStars® Customer Pricing and Profitability™; ProfitStars® Direct™; ProfitStars® Financial Performance Suite™; ProfitStars® Mobile™; ProfitStars Synergy®; Refi Analyzer™; Regulatory Reporting Solutions™; Relationship 360™; Relationship Profitability Management™ (RPM); RemitCentral™; RemitPlus®; RemitPlus® Express™; RemitPlus® HRCM™; RemitPlus® Remittance/Lockbox™; RemitWeb™; Remote Deposit Anywhere™; Remote Deposit Complete™; Remote Deposit Express™; Remote Deposit Now™; Remote Deposit Scan™; ReportHub™; RPM Reporting Service™; Silhouette Document Imaging®; SilverLake Real Time™; SilverLake System®; SilverLake Teller™; SilverLake Teller Capture™; SilverLake Teller Offline™; Smart EIP™; Smart GL™; SmartSight®; smsGuardian™; Store & Forward™; StreamLine Platform Automation®; StreamLine Platform Automation® – Deposits™; StreamLine Platform Automation® – Loans™; Summit Support®; SymAdvisor™; SymApp™; SymChoice Loan™; SymConnect™; SymForm™; SymForm PDF™; Symitar®; Symitar® ATM Services™; Symitar® Database Cleansing Package™; Symitar® eNotifications™; Symitar® Fraud Management™; Symitar® Member Business Services™; Symitar® Member Privilege™; Symitar® Wire Management™; Symitar® EASE™; SymX™; SymXchange™; Synapsys®; Synapsys® Lobby Tracking™; Synapsys® Member Relationship Management™; Synergy AdvancedPDF™; Synergy API Integration Toolkit™; Synergy AutoImport™; Synergy Automated Document Recognition™ (ADR); Synergy Batch Document Recognition™ (BDR); Synergy Check Archive™; Synergy DataMart™; Synergy Document Management™; Synergy Document Recognition™; Synergy Document Tracking™; Synergy eDistribution™; Synergy eMailAssist™; Synergy Enterprise Content Management™ (ECM); Synergy eSign™; Synergy eSignWeb™; Synergy eSign Integration Module™; Synergy eStorage™; Synergy Express™; Synergy Express Custom Data Storage Report™; Synergy Express Report Parameter Service™; Synergy ID Scan™; Synergy iSign™; Synergy Kofax Capture™; Synergy PowerSearch™; Synergy Reports™; Synergy Workflow Management™; TellerMaster™; Teller BondMaster™; Teller Cash Dispenser™; Teller Cash Recycler™; Teller CheckMaster™; Teller CheckMaster Plus™; Teller Co-Mingle™; Teller CTRMaster™; Teller Isosoles™; Teller PassBook™; Teller SigMaster™; Teller Capture™; Teller Orbograph™; TheWayiPay®; TimeTrack Human Resources™; TimeTrack Payroll System™; TimeTrack Time and Attendance™; Transaction Logging and Vaulting Server™; Transaction Logging Server™; ValuePass™; Vehicle Pricing Interface™; Vertex Teller Automation System™; Virtual Transaction Logging Server™; WebEpisys™; Yellow Hammer™; Yellow Hammer Express™; Yellow Hammer ACH Origination™; Yellow Hammer BSA™; Yellow Hammer BSA Express™; Yellow Hammer BSA Regulatory Consulting Service™; Yellow Hammer EFT Fraud Detective™; Yellow Hammer Fraud Detective™; Yellow Hammer SAR Center™; Yellow Hammer Wire Origination™; Xperience™

Slogans

Cutting-Edge IT Solutions for the Future of Credit Unions™; Know-It-All – Empowering Users Through Knowledge™; Leading through technology ... guiding through support™; Powering Actionable Insight™; The Depth of Financial Intelligence™; We Are Looking Out For You™; Where Tradition Meets Technology™

Various other trademarks and service marks used or referenced in this document are the property of their respective companies/owners.

Other Trademarks

The MIT License (MIT)

Permission is hereby granted, free of charge, to any person obtaining a copy of this software and associated documentation files (the "Software"), to deal in the Software without restriction, including without limitation the rights to use, copy, modify, merge, publish, distribute, sublicense, and/or sell copies of the Software, and to permit persons to whom the Software is furnished to do so, subject to the following conditions:

The above copyright notice and this permission notice shall be included in all copies or substantial portions of the Software.

Portions of this software:

The MIT License (MIT)

Copyright (c) 2014-2015 Andrey Gershun (agershun@gmail.com) &

Mathias Rangel Wulff (mathiasrw@gmail.com)

Copyright (c) 2013-2015 The AngularUI Team, Karsten Sperling

Copyright (c) 2010-2015 Google, Inc. <http://angularjs.org>

Copyright (c) 2012-2015 the AngularUI Team, <https://github.com/organizations/angular-ui/teams/291112>

Copyright (c) 2014 philippd

Copyright © 2015 Philipp Alferov.

Copyright (c) 2013 danialfarid

Copyright (c) 2013 Marco Rinck

Copyright (c) 2013 Mike Grabski

Copyright (c) 2014 Igor Rafael

Copyright (c) <2014> <pascal.precht@gmail.com>

Copyright (C) 2014 lisposter(Leigh Zhu)

Copyright (c) 2014 Michael Bromley

Copyright © 2014 Eli Grey.

Copyright (c) 2011-2015 Twitter, Inc

Copyright (c) 2008-2014 Pivotal Labs

Copyright 2005, 2014 jQuery Foundation, Inc. and other contributors

Copyright (c) 2007 James Newton-King

Copyright (c) 2009–2015 Modernizr

Copyright (c) 2011-2015 Tim Wood, Iskren Chernev, Moment.js contributors

Copyright (c) 2013 FeedbackHound

Copyright (c) 2015 the AngularUI Team, <http://angular-ui.github.com>

Copyright (c) 2009-2014 Jon Rohan, James M. Greene

Permission is hereby granted, free of charge, to any person obtaining a copy of this software and associated documentation files (the "Software"), to deal in the Software without restriction, including without limitation the rights to use, copy, modify, merge, publish, distribute, sublicense, and/or sell copies of the Software, and to permit persons to whom the Software is furnished to do so, subject to the following conditions:

The above copyright notice and this permission notice shall be included in all copies or substantial portions of the Software.

THE SOFTWARE IS PROVIDED "AS IS", WITHOUT WARRANTY OF ANY KIND, EXPRESS OR IMPLIED, INCLUDING BUT NOT LIMITED TO THE WARRANTIES OF MERCHANTABILITY, FITNESS FOR A PARTICULAR PURPOSE AND NONINFRINGEMENT. IN NO EVENT SHALL THE AUTHORS OR COPYRIGHT HOLDERS BE LIABLE FOR ANY CLAIM, DAMAGES OR OTHER LIABILITY, WHETHER IN AN ACTION OF CONTRACT, TORT OR OTHERWISE, ARISING FROM, OUT OF OR IN CONNECTION WITH THE SOFTWARE OR THE USE OR OTHER DEALINGS IN THE SOFTWARE.

BSD License

Copyright (c) 2010 Terence Parr

PhantomJS

Copyright (c) 2015, Hibernating Rhinos

All rights reserved. Redistribution and use in source and binary forms, with or without modification, are permitted provided that the following conditions are met:

Redistributions of source code must retain the above copyright notice, this list of conditions and the following disclaimer. Redistributions in binary form must reproduce the above copyright notice, this list of conditions and the following disclaimer in the documentation and/or other materials provided with the distribution. Neither the name of the author nor the names of its contributors may be used to endorse or promote products derived from this software without specific prior written permission.

THIS SOFTWARE IS PROVIDED BY THE COPYRIGHT HOLDERS AND CONTRIBUTORS "AS IS" AND ANY EXPRESS OR IMPLIED WARRANTIES, INCLUDING, BUT NOT LIMITED TO, THE IMPLIED WARRANTIES OF MERCHANTABILITY AND FITNESS FOR A PARTICULAR PURPOSE ARE DISCLAIMED. IN NO EVENT SHALL THE COPYRIGHT OWNER OR CONTRIBUTORS BE LIABLE FOR ANY DIRECT, INDIRECT, INCIDENTAL, SPECIAL, EXEMPLARY, OR CONSEQUENTIAL DAMAGES (INCLUDING, BUT NOT LIMITED TO, PROCUREMENT OF SUBSTITUTE GOODS OR SERVICES; LOSS OF USE, DATA, OR PROFITS; OR BUSINESS INTERRUPTION) HOWEVER CAUSED AND ON ANY THEORY OF LIABILITY, WHETHER IN CONTRACT, STRICT LIABILITY, OR TORT (INCLUDING NEGLIGENCE OR OTHERWISE) ARISING IN ANY WAY OUT OF THE USE OF THIS SOFTWARE, EVEN IF ADVISED OF THE POSSIBILITY OF SUCH DAMAGE.

Apache License

Copyright (c) 2009-2010 dotless project, <http://www.dotlesscss.com>

Copyright (C) 2012-2015 SheetJS

Unity

Version 2.0, January 2004

<http://www.apache.org/licenses/>

TERMS AND CONDITIONS FOR USE, REPRODUCTION, AND DISTRIBUTION

1. Definitions.

"License" shall mean the terms and conditions for use, reproduction, and distribution as defined by Sections 1 through 9 of this document. "Licensor" shall mean the copyright owner or entity authorized by the copyright owner that is granting the License. "Legal Entity" shall mean the union of the acting entity and all other entities that control, are controlled by, or are under common control with that entity. For the purposes of this definition, "control" means (i) the power, direct or indirect, to cause the direction or management of such entity, whether by contract or otherwise, or (ii) ownership of fifty percent (50%) or more of the outstanding shares, or (iii) beneficial ownership of such entity. "You" (or "Your") shall mean an individual or Legal Entity exercising permissions granted by this License. "Source" form shall mean the preferred form for making modifications, including but not limited to software source code, documentation source, and configuration files. "Object" form shall mean any form resulting from mechanical transformation or translation of a Source form, including but not limited to compiled object code, generated documentation, and conversions to other media types. "Work" shall mean the work of authorship, whether in Source or Object form, made available under the License, as indicated by a copyright notice that is included in or attached to the work (an example is provided in the Appendix below). "Derivative Works" shall mean any work, whether in Source or Object form, that is based on (or derived from) the Work and for which the editorial revisions, annotations, elaborations, or other modifications represent, as a whole, an original work of authorship. For the purposes of this License, Derivative Works shall not include works that remain separate from, or merely link (or bind by name) to the interfaces of, the Work and Derivative Works thereof. "Contribution" shall mean any work of authorship, including the original version of the Work and any modifications or additions to that Work or Derivative Works thereof, that is intentionally submitted to Licensor for inclusion in the Work by the copyright owner or by an individual or Legal Entity authorized to submit on behalf of the copyright owner. For the purposes of this definition, "submitted" means any form of electronic, verbal, or written communication sent to the Licensor or its representatives, including but not limited to communication on electronic mailing lists, source code control systems, and issue tracking systems that are managed by, or on behalf of, the Licensor for the purpose of discussing and improving the Work, but excluding communication that is conspicuously marked or otherwise designated in writing by the copyright owner as "Not a Contribution." "Contributor" shall mean Licensor and any individual or Legal Entity on behalf of whom a Contribution has been received by Licensor and subsequently incorporated within the Work.

2. Grant of Copyright License. Subject to the terms and conditions of this License, each Contributor hereby grants to You a perpetual, worldwide, non-exclusive, no-charge, royalty-free, irrevocable copyright license to reproduce, prepare Derivative Works of, publicly display, publicly perform, sublicense, and distribute the Work and such Derivative Works in Source or Object form.

3. Grant of Patent License. Subject to the terms and conditions of this License, each Contributor hereby grants to You a perpetual, worldwide, non-exclusive, no-charge, royalty-free, irrevocable (except as stated in this section) patent license to make, have made, use, offer to sell, sell, import, and otherwise transfer the Work, where such license applies only to those patent claims licensable by such Contributor that are necessarily infringed by their Contribution(s) alone or by combination of their Contribution(s) with the Work to which such Contribution(s) was submitted. If You institute patent litigation against any entity (including a cross-claim or counterclaim in a lawsuit) alleging that the Work or a Contribution incorporated within the Work constitutes direct or contributory patent infringement, then any patent licenses granted to You under this License for that Work shall terminate as of the date such litigation is filed.

4. Redistribution. You may reproduce and distribute copies of the Work or Derivative Works thereof in any medium, with or without modifications, and in Source or Object form, provided that You meet the following conditions:

(a) You must give any other recipients of the Work or Derivative Works a copy of this License; and (b) You must cause any modified files to carry prominent notices stating that You changed the files; and (c) You must retain, in the Source form of any Derivative Works that You distribute, all copyright, patent, trademark, and attribution notices from the Source form of the Work, excluding those notices that do not pertain to any part of the Derivative Works; and (d) If the Work includes a "NOTICE" text file as part of its distribution, then any Derivative Works that You distribute must include a readable copy of the attribution notices contained within such NOTICE file, excluding those notices that do not pertain to any part of the Derivative Works, in at least one of the following places: within a NOTICE text file distributed as part of the Derivative Works; within the Source form or documentation, if provided along with the Derivative Works; or, within a display generated by the Derivative Works, if and wherever such third-party notices normally appear. The contents of the NOTICE file are for informational purposes only and do not modify the License. You may add Your own attribution notices within Derivative Works that You distribute, alongside or as an addendum to the NOTICE text from the Work, provided that such additional attribution notices cannot be construed as modifying the License. You may add Your own copyright statement to Your modifications and may provide additional or different license terms and conditions for use, reproduction, or distribution of Your modifications, or for any such Derivative Works as a whole, provided Your use, reproduction, and distribution of the Work otherwise complies with the conditions stated in this License.

5. Submission of Contributions. Unless You explicitly state otherwise, any Contribution intentionally submitted for inclusion in the Work by You to the Licensor shall be under the terms and conditions of this License, without any additional terms or conditions. Notwithstanding the above, nothing herein shall supersede or modify the terms of any separate license agreement you may have executed with Licensor regarding such Contributions.

6. Trademarks. This License does not grant permission to use the trade names, trademarks, service marks, or product names of the Licensor, except as required for reasonable and customary use in describing the origin of the Work and reproducing the content of the NOTICE file.

7. Disclaimer of Warranty. Unless required by applicable law or agreed to in writing, Licensor provides the Work (and each Contributor provides its Contributions) on an "AS IS" BASIS, WITHOUT WARRANTIES OR CONDITIONS OF ANY KIND, either express or implied, including, without limitation, any warranties or conditions of TITLE, NON-INFRINGEMENT, MERCHANTABILITY, or FITNESS FOR A PARTICULAR PURPOSE. You are solely responsible for determining the appropriateness of using or redistributing the Work and assume any risks associated with Your exercise of permissions under this License.

8. Limitation of Liability. In no event and under no legal theory, whether in tort (including negligence), contract, or otherwise, unless required by applicable law (such as deliberate and grossly negligent acts) or agreed to in writing, shall any Contributor be liable to You for damages, including any direct, indirect, special, incidental, or consequential damages of any character arising as a result of this License or out of the use or inability to use the Work (including but not limited to damages for loss of goodwill, work stoppage, computer failure or malfunction, or any and all other commercial damages or losses), even if such Contributor has been advised of the possibility of such damages.

9. Accepting Warranty or Additional Liability. While redistributing the Work or Derivative Works thereof, You may choose to offer, and charge a fee for, acceptance of support, warranty, indemnity, or other liability obligations and/or rights consistent with this License. However, in accepting such obligations, You may act only on Your own behalf and on Your sole responsibility, not on behalf of any other Contributor, and only if You agree to indemnify, defend, and hold each Contributor harmless for any liability incurred by, or claims asserted against, such Contributor by reason of your accepting any such warranty or additional liability.

END OF TERMS AND CONDITIONS

MICROSOFT .NET LIBRARY

These license terms are an agreement between Microsoft Corporation (or based on where you live, one of its affiliates) and you. Please read them. They apply to the software named above, which includes the media on which you received it, if any. The terms also apply to any Microsoft updates, supplements, Internet-based services, and support services for this software, unless other terms accompany those items. If so, those terms apply.

BY USING THE SOFTWARE, YOU ACCEPT THESE TERMS. IF YOU DO NOT ACCEPT THEM, DO NOT USE THE SOFTWARE. IF YOU COMPLY WITH THESE LICENSE TERMS, YOU HAVE THE PERPETUAL RIGHTS BELOW.

1. **INSTALLATION AND USE RIGHTS.** a. **Installation and Use.** You may install and use any number of copies of the software to design, develop and test your programs. You may modify, copy, distribute or deploy any .js files contained in the software as part of your programs. b. **Third Party Programs.** The software may include third party programs that Microsoft, not the third party, licenses to you under this agreement. Notices, if any, for the third party program are included for your information only. 2. **ADDITIONAL LICENSING REQUIREMENTS AND/OR USE RIGHTS.** a. **DISTRIBUTABLE CODE.** In addition to the .js files described above, the software is comprised of Distributable Code. "Distributable Code" is code that you are permitted to distribute in programs you develop if you comply with the terms below. i. **Right to Use and Distribute.** You may copy and distribute the object code form of the software. Third Party Distribution. You may permit distributors of your programs to copy and distribute the Distributable Code as part of those programs. ii. **Distribution Requirements.** For any Distributable Code you distribute, you must use the Distributable Code in your programs and not as a standalone distribution; require distributors and external end users to agree to terms that protect it at least as much as this agreement; display your valid copyright notice on your programs; and indemnify, defend, and hold harmless Microsoft from any claims, including attorneys' fees, related to the distribution or use of your programs. iii. **Distribution Restrictions.** You may not alter any copyright, trademark or patent notice in the Distributable Code; use Microsoft's trademarks in your programs' names or in a way that suggests your programs come from or are endorsed by Microsoft; include Distributable Code in malicious, deceptive or unlawful programs; or modify or distribute the source code of any Distributable Code so that any part of it becomes subject to an Excluded License. An Excluded License is one that requires, as a condition of use, modification or distribution, that the code be disclosed or distributed in source code form; or others have the right to modify it. 3. **SCOPE OF LICENSE.** The software is licensed, not sold. This agreement only gives you some rights to use the software. Microsoft reserves all other rights. Unless applicable law gives you more rights despite this limitation, you may use the software only as expressly permitted in this agreement. In doing so, you must comply with any technical limitations in the software that only allow you to use it in certain ways. You may not work around any technical limitations in the software; reverse engineer, decompile or disassemble the software, except and only to the extent that applicable law expressly permits, despite this limitation; publish the software for others to copy; rent, lease or lend the software; or transfer the software or this agreement to any third party. 4. **BACKUP COPY.** You may make one backup copy of the software. You may use it only to reinstall the software. 5. **DOCUMENTATION.** Any person that has valid access to your computer or internal network may copy and use the documentation for your internal, reference purposes. 6. **EXPORT RESTRICTIONS.** The software is subject to United States export laws and regulations. You must comply with all domestic and international export laws and regulations that apply to the software. These laws include restrictions on destinations, end users and end use. For additional information, see www.microsoft.com/exporting. 7. **SUPPORT SERVICES.** Because this software is "as is," we may not provide support services for it. 8. **ENTIRE AGREEMENT.** This agreement, and the terms for supplements, updates, Internet-based services and support services that you use, are the entire agreement for the software and support services. 9. **APPLICABLE LAW.** a. **United States.** If you acquired the software in the United States, Washington state law governs the interpretation of this agreement and applies to claims for breach of it, regardless of conflict of laws principles. The laws of the state where you live govern all other claims, including claims under state consumer protection laws, unfair competition laws, and in tort. b. **Outside the United States.** If you acquired the software in any other country, the laws of that country apply. 10. **LEGAL EFFECT.** This agreement describes certain legal rights. You may have other rights under the laws of your country. You may also have rights with respect to the party from whom you acquired the software. This agreement does not change your rights under the laws of your country if the laws of your country do not permit it to do so. 11. **DISCLAIMER OF WARRANTY.** THE SOFTWARE IS LICENSED "AS-IS." YOU BEAR THE RISK OF USING IT. MICROSOFT GIVES NO EXPRESS WARRANTIES, GUARANTEES OR CONDITIONS. YOU MAY HAVE ADDITIONAL CONSUMER RIGHTS OR STATUTORY GUARANTEES UNDER YOUR LOCAL LAWS WHICH THIS AGREEMENT CANNOT CHANGE. TO THE EXTENT PERMITTED UNDER YOUR LOCAL LAWS, MICROSOFT EXCLUDES THE IMPLIED WARRANTIES OF MERCHANTABILITY, FITNESS FOR A PARTICULAR PURPOSE AND NON-INFRINGEMENT. 12. **LIMITATION ON AND EXCLUSION OF REMEDIES AND DAMAGES.** YOU CAN RECOVER FROM MICROSOFT AND ITS SUPPLIERS ONLY DIRECT DAMAGES UP TO U.S. \$5.00. YOU CANNOT RECOVER ANY OTHER DAMAGES, INCLUDING CONSEQUENTIAL, LOST PROFITS, SPECIAL, INDIRECT OR INCIDENTAL DAMAGES. This limitation applies to anything related to the software, services, content (including code) on third party Internet sites, or third party programs; and claims for breach of contract, breach of warranty, guarantee or condition, strict liability, negligence, or other tort to the extent permitted by applicable law. It also applies even if Microsoft knew or should have known about the possibility of the damages. The above limitation or exclusion may not apply to you because your country may not allow the exclusion or limitation of incidental, consequential or other damages.

Contents

System Requirements	3
Other Supported Scanners	4
Windows 10 Users.....	4
Confirming Your System Administrator Privileges.....	6
Browser Settings	8
Configuring Temporary Internet Files and History Settings – Internet Explorer Only	8
Scanner Device Control.....	10
Device Control Indicators.....	10
Disabling Alerts, Launch on Startup, Auto Detect Proxy	10
Changing a Scanner	11
Uninstalling a Scanner	13
Troubleshooting.....	17
Application Will Not Launch	17
Check Jam	19
“Choose A Device Manufacturer” Prompt Appears Every Time.....	20
Communication Error/Failure	21
Device Error: SAFETY	22
Device Error for Panini VisionX: Compression Error	23
Error Connecting to Device Control	24
Images With Horizontal Black Lines.....	25
Verifying Power Options	25
Cleaning Image Cameras	29
Electrical Interference.....	29
Poor Electrical Circuit	30
Degraded USB Controller or Cable.....	30
Other USB Devices	30
Outdated BIOS/firmware/chipset	30
Pocket Options for Panini I:Deal (RDS and RDC).....	30
“Required supported device list not available” Error.....	32
Terminal Not Enabled	32
Terminal Not Set Up	32

System Requirements

For an optimal experience a high-speed Internet connection is recommended, in addition the following components are required for working with the application(s).

NOTE: The application does not support Apple® Boot Camp® or any virtualization software.

For the PC:

- Local administrative rights
- USB port 2.0 or higher
- .NET® Framework 4.6 or higher

For Microsoft® Windows®:

- Windows 7 Service Pack 1: Microsoft Internet Explorer® 11 or Google Chrome™
- Windows 8.1: Microsoft Internet Explorer 11 or Google Chrome
- Windows 10: Microsoft Internet Explorer 11, Microsoft Edge®, or Google Chrome

NOTE: The current version of Chrome and its two previous versions are supported.

The following scanners support this application's features.

Scanner	Model Supported
Panini®	I:Deal® WI: Deal My Vision X Vision X
Digital Check®	CX30 TS230 TS240
RDM®	EC7000i EC7500i
Epson®	Capture One TMS 1000

Scanner	Model Supported
Unisys Burroughs®	Micro EX
	Micro Elite
	SmartSource Professional®
	SmartSource Professional Elite
	SmartSource Merchant Elite
	SmartSource Value

Other Supported Scanners

For a complete list of supported scanners, please refer to the *EPS Compatible Hardware Matrix* document on the *Downloads* page of the Partner Portal.

Windows 10 Users

If you are using Windows 10 with Microsoft Edge, ensure that <https://smartpay.profitstars.com> is not in trusted sites.

1. From the **Start** menu, select **Control Panel**. Choose **Internet Options**.

NOTE: You may need to select **Network and Internet** and then **Internet Options**. (To view a screenshot for reference, refer to *Figure 7 – Control Panel* below.)

2. From the tabs at the top of the *Internet Options* window, choose **Security**.



FIGURE 1 - SECURITY TAB UNDER INTERNET OPTIONS

3. Select the **Trusted sites** icon to activate the **Sites** option. Choose **Sites**.



FIGURE 2 - SITES OPTION UNDER TRUSTED SITES CATEGORY

4. The *Trusted sites* window appears. In the **Websites** field, click the URL: <https://smartpay.profitstars.com> and then select **Remove**.

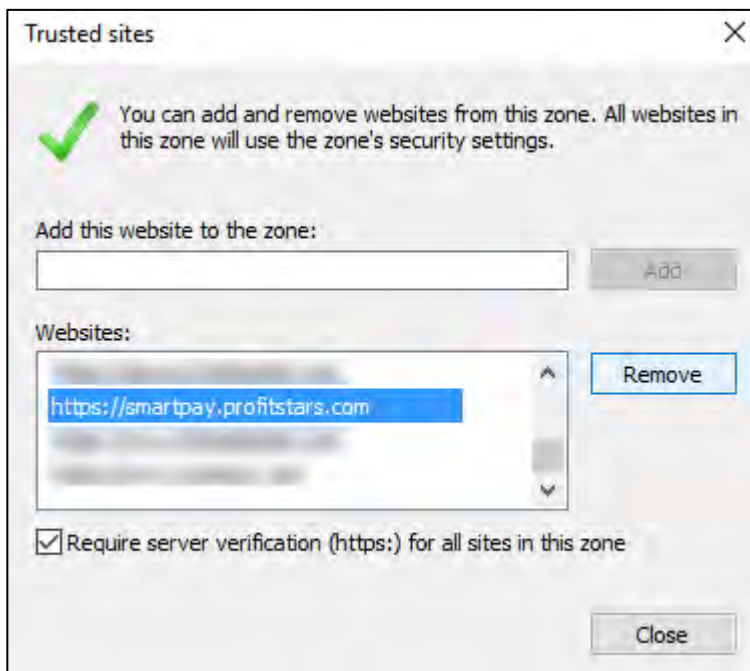


FIGURE 3 – REMOVING A TRUSTED SITE

Confirming Your System Administrator Privileges

A user needs the necessary privileges for installation purposes. Follow the steps below to determine whether a particular user has system administrator privileges.

1. From your computer desktop, click the **Start** button.
2. For Windows 7, right-click **Computer** or **This PC** and then select **Manage** (as shown below).
3. For Windows 8.1 and 10, right-click the **Start** menu and then select **Computer Management** (as shown below).

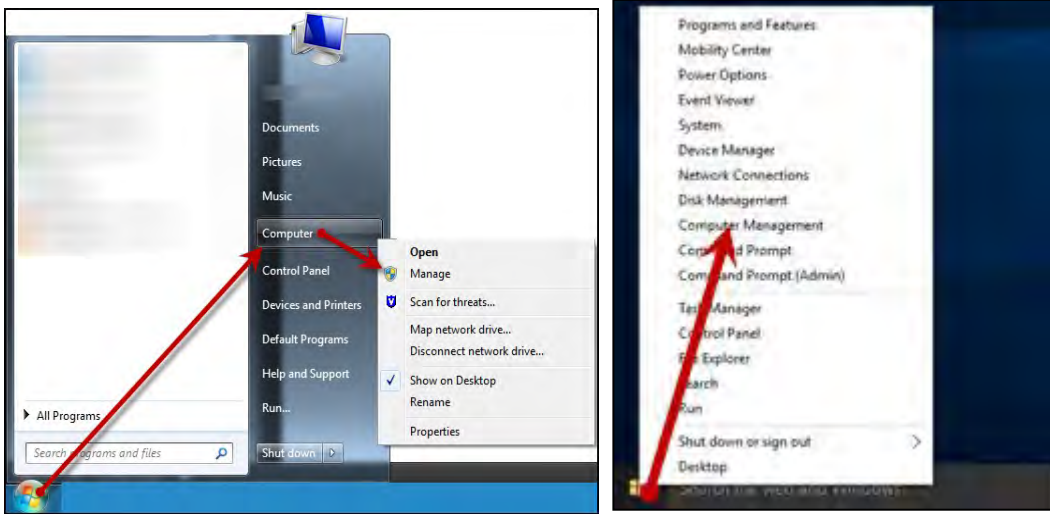


FIGURE 4 – MANAGE OPTION UNDER COMPUTER IN THE START MENU

4. The *Computer Management* window appears. Under **Local Users and Groups**, select the **Groups** folder.
5. Right-click **Administrators** and then select **Properties**, as shown in the image below.

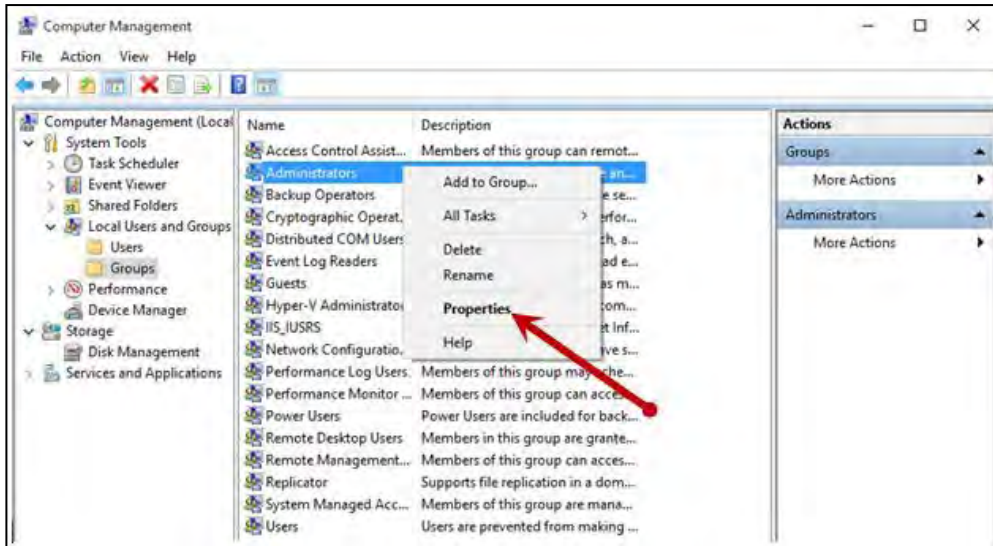


FIGURE 5 – PROPERTIES OPTION FOR ADMINISTRATOR PRIVILEGES

6. The *Administrators Properties* window appears. If the account a person uses to log in is not displayed under the **Members** field, that user does not have administrative privileges.

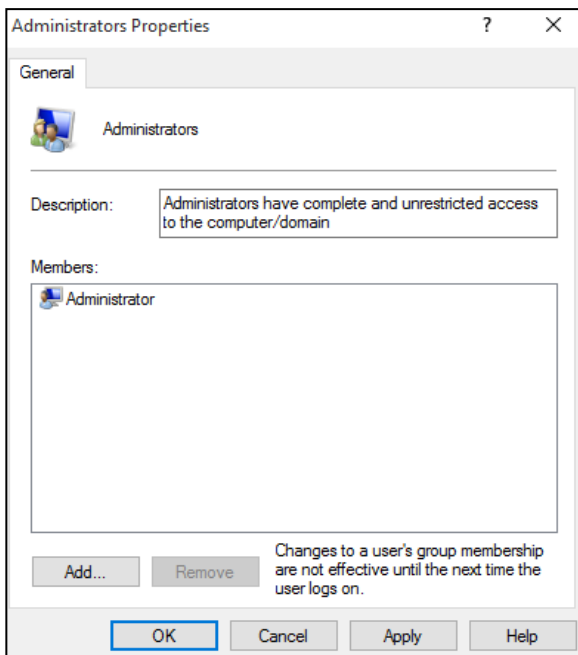


FIGURE 6 – USERS WITH ADMINISTRATIVE PRIVILEGES

Browser Settings

Configuring Temporary Internet Files and History Settings – Internet Explorer Only

Configuring these settings can keep the pages in the system consistently refreshed with information.

1. Choose **Control Panel** from your **Start** menu.
2. Select **Internet Options**, as pictured below.

NOTE: You may need to select **Network and Internet**, and then choose **Internet Options**.

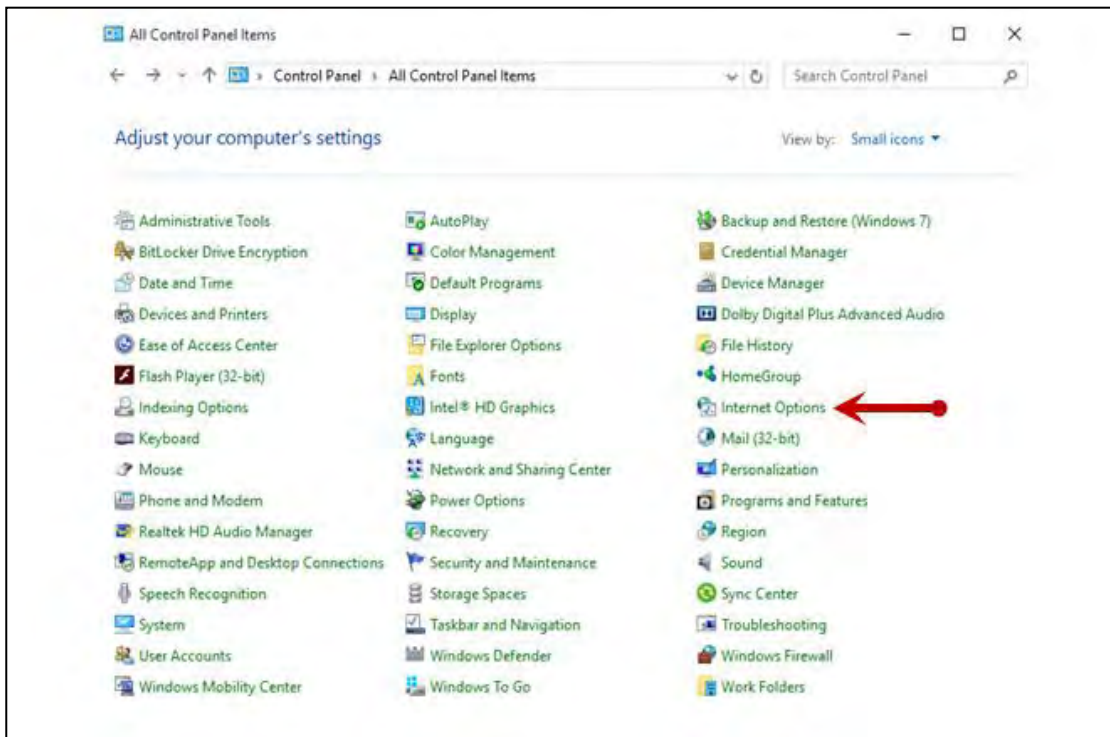


FIGURE 7 – CONTROL PANEL

3. From the tabs at the top of the *Internet Options* window, select **General**.

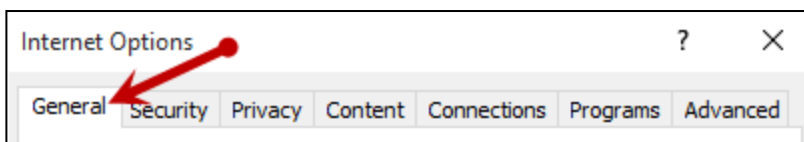


FIGURE 8 - GENERAL TAB FOR INTERNET OPTIONS

4. Under the *Browsing history* section, choose the **Settings** option.

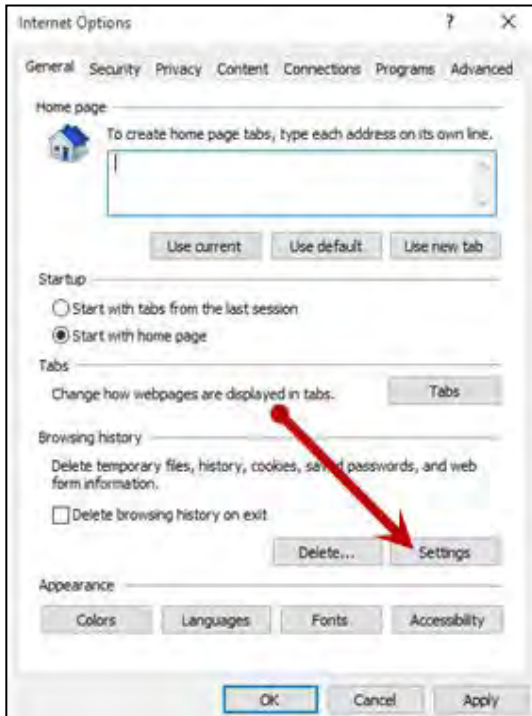


FIGURE 9 - SETTINGS OPTION UNDER BROWSING HISTORY

5. The *Temporary Internet Files and History Settings* window appears. Under *Check for newer versions of stored pages*, select the **Every time I visit the webpage** option.

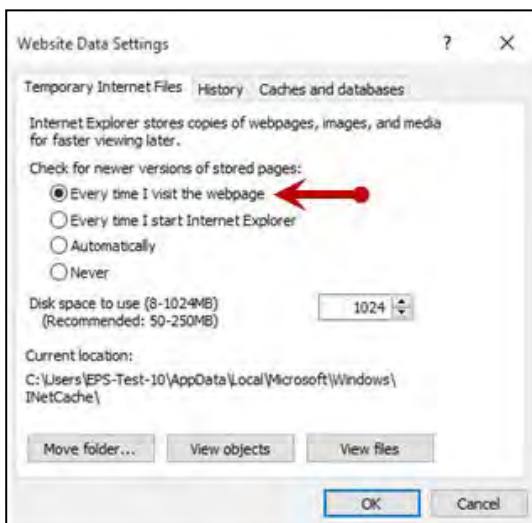


FIGURE 10 – TEMPORARY INTERNET FILES AND HISTORY SETTINGS

6. Select **OK** at the bottom of the *Temporary Internet Files and History Settings* window.
7. Select **OK** from the bottom of the *Internet Options* window.

Scanner Device Control

Device Control Indicators

The Device Control can be in any one of several statuses. Look to your hidden icons in the task bar of your desktop to view the status of the Device Control. In the following figure, the Device Control icon is yellow, indicating that it is in use.



FIGURE 11 - DEVICE CONTROL ICON

- A green icon indicates the Device Control services are available.
- A black icon indicates that the Device Control services are offline.
- A red icon indicates that an error has occurred with the Device Control.
- A yellow icon indicates that Device Control is in the process of scanning.
- A blue icon indicates that the Middleware for the device is online.
- A orange icon indicates that the device is open.

Disabling Alerts, Launch on Startup, Auto Detect Proxy

Use the following steps to limit the amount of alerts and status messages received from Device Control, disable Device Control from launching on startup or to turn on the auto detecting proxy configuration.

1. On the bottom task bar, select the **Show hidden icons** option.



FIGURE 12 - SHOW HIDDEN ICONS OPTION

2. Right-click the **Device Control** icon and select **Options**.
3. As shown below, select the option you would like to change, **Display Alert Balloons**, **Launch on Startup**, or **Auto Detect Proxy**. The option should now be selected or deselected. (An unchecked option means that the setting is off, while a checked option means the setting is enabled.)

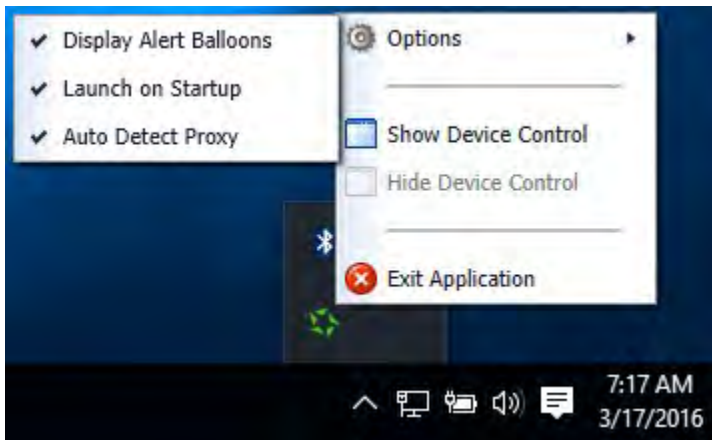


FIGURE 13 - DISPLAY ALERT BALLOONS OPTION, SELECTED

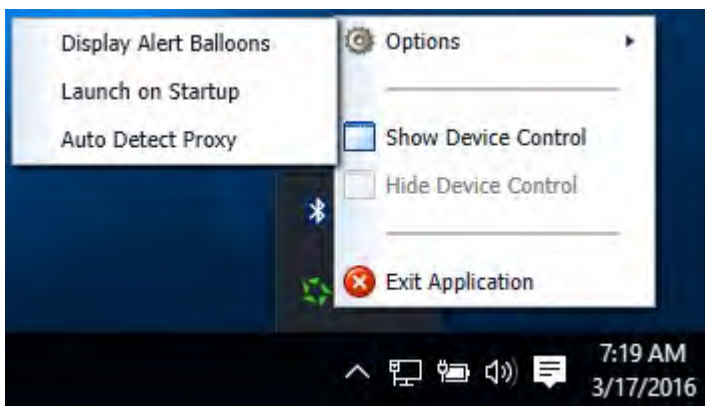


FIGURE 14 - DISPLAY ALERT BALLOONS, DESELECTED

Changing a Scanner

To select a different scanner with the Device Control, follow the steps below.

NOTE: If a merchant has multiple scanner makes/models assigned, you may need to delete your browsing history to clear the scanner cookies used by Device Control. This should allow you to select another scanner.

1. From the *Device Control Information* window, select **Service | Stop**.

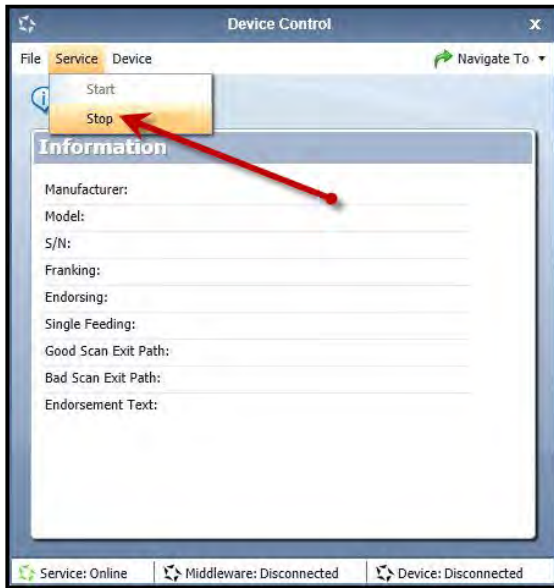


FIGURE 15 - STOP DEVICE CONTROL SERVICE

2. Select **Device | Chooser**.

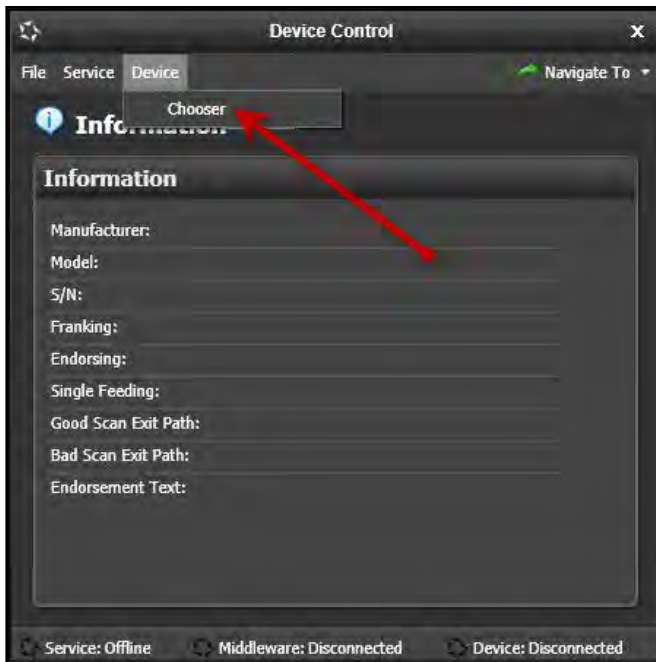


FIGURE 16 - DEVICE | CHOOSER OPTION

3. The *Choose a Device Manufacturer* window appears. Select a manufacturer for the scanner you wish to utilize. You may also opt to select a particular model.



FIGURE 17 - SELECTING A NEW SCANNER AND MODEL

4. If the scanner model you selected has not yet been installed, the system will display an indicator, *Not Installed!* You have the option of installing this scanner if applicable.



FIGURE 18 - SELECTED DEVICE NOT INSTALLED

Uninstalling a Scanner

Use the following steps to uninstall a scanner once you have Device Control installed.

1. In the *Device Control* window under the *Choose a Device Manufacturer* heading, select the **Uninstall** option.

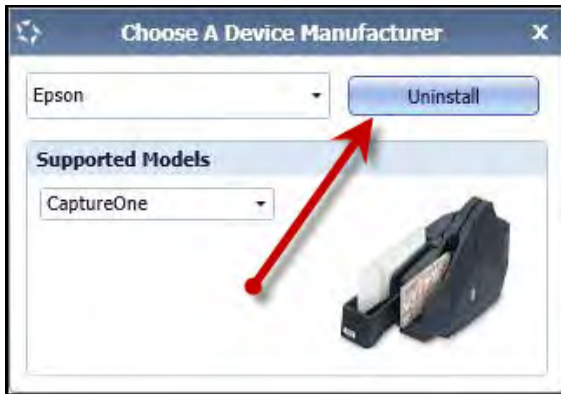


FIGURE 19 - UNINSTALL OPTION

2. The *Add/Remove Devices* page appears. Choose the scanner to uninstall, and select **Uninstall**.

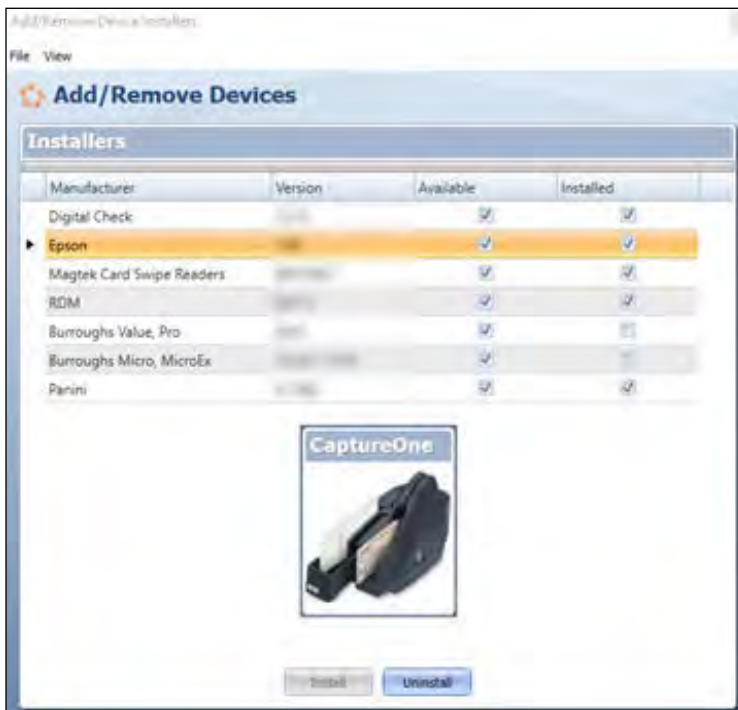


FIGURE 20 - SELECTING A SCANNER WITH UNINSTALL OPTION

3. The Uninstall Wizard initiates. Complete the instructions, and then click **Next** to continue

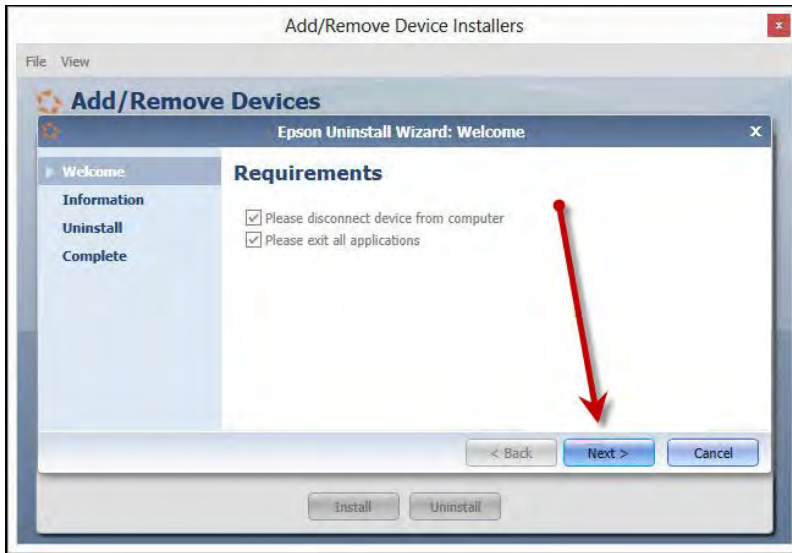


FIGURE 21 - UNINSTALL WIZARD WITH NEXT OPTION

4. The installer information for the scanner appears. Choose **Next** to continue.



FIGURE 22 - UNINSTALL WIZARD WITH INSTALLER INFORMATION

5. The uninstallation process will complete. Select **Next** to continue.



FIGURE 23 - UNINSTALL PROMPT

6. Once the process is complete, click **Finish**. The scanner you selected will now be uninstalled.



FIGURE 24 - UNINSTALL COMPLETE PROMPT

Troubleshooting

Application Will Not Launch

If you receive the following error message, follow the steps below to resolve the issue.

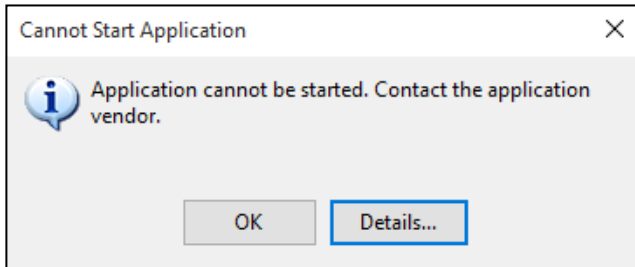


FIGURE 25 - APPLICATION CANNOT START

NOTE: The user performing the following tasks will need administrator privileges.

1. From the Start menu, select **Programs and Features**. Note: If you are using Windows 7 you will need to select **Control Panel** first, and then select **Programs and Features** from the list of items.

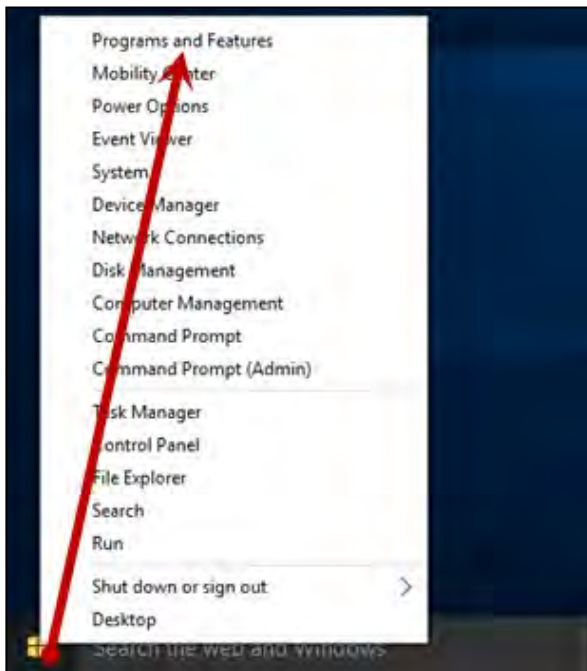


FIGURE 26 - CONTROL PANEL OPTION, WINDOWS 10

- From the *Programs and Features* window, select the **EPS Device Control** application and then select the **Uninstall/Change** option (as shown below).

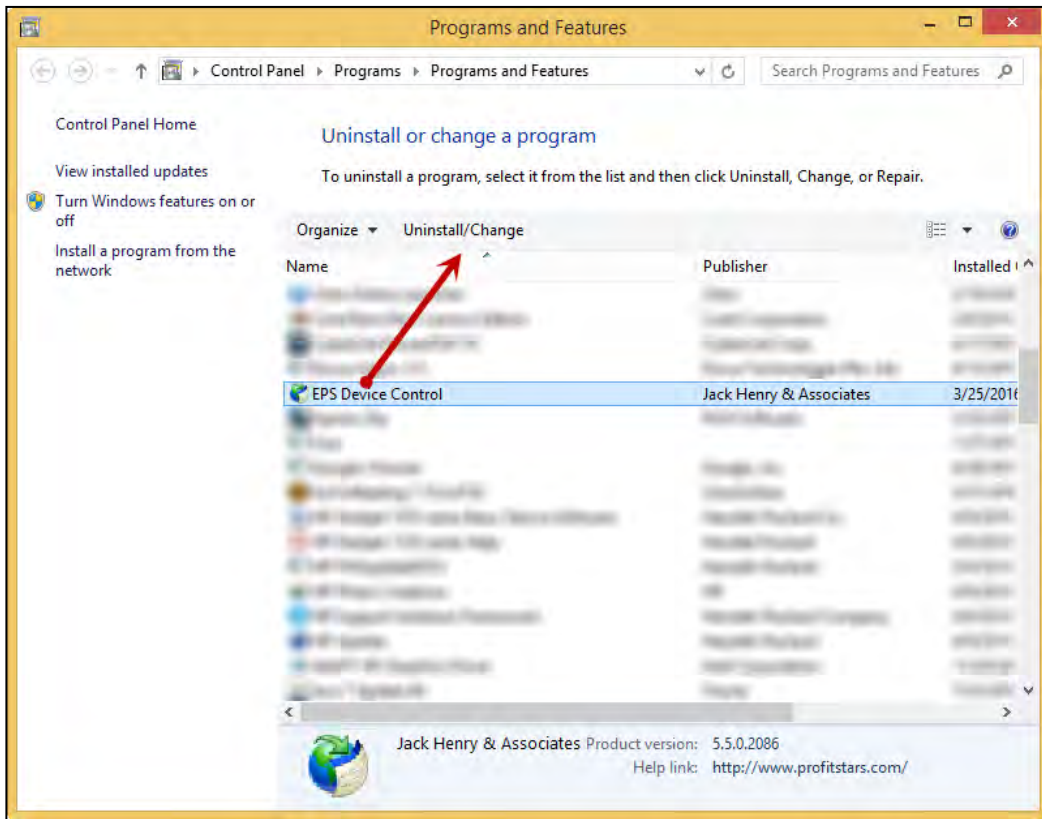


FIGURE 27 - UNINSTALLING EPS DEVICE CONTROL

- Navigate to the application, and log in. Select the **Transactions** tab from the top of the page.
- From the left navigational bar, attempt to launch/run Device Control by selecting your Remote Deposit option and creating a deposit. During this process, you will receive the following prompt to reinstall/launch Device Control.

Depending on your browser type, you will see one of the following prompts:

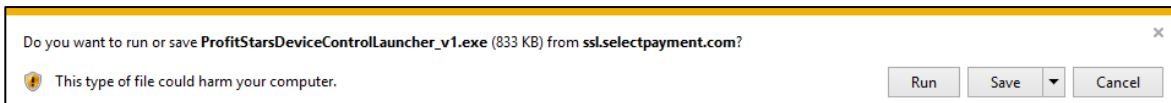


FIGURE 28 – LAUNCH DEVICE CONTROL PROMPT – INTERNET EXPLORER

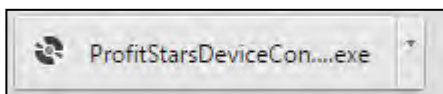


FIGURE 29 - LAUNCH EPS DEVICE CONTROL – GOOGLE CHROME

5. Select **Install** before creating a deposit.

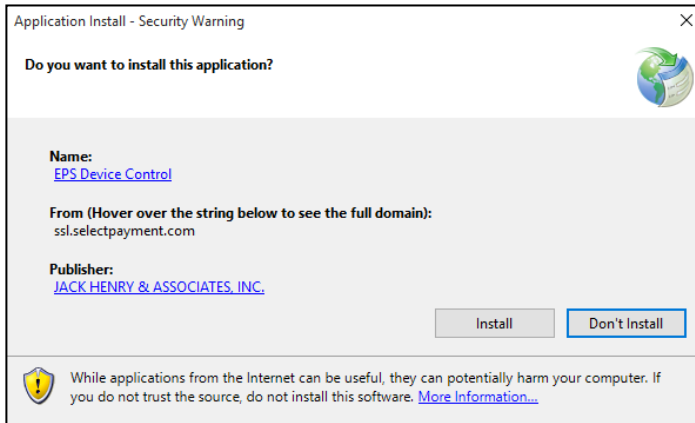


FIGURE 30 - PROMPT TO INSTALL DEVICE CONTROL

Check Jam

The figures below are errors that display when a check jams during scanning. Remove the check item from the scanner, select the **Reset Scanner** option, and then try scanning the item again.

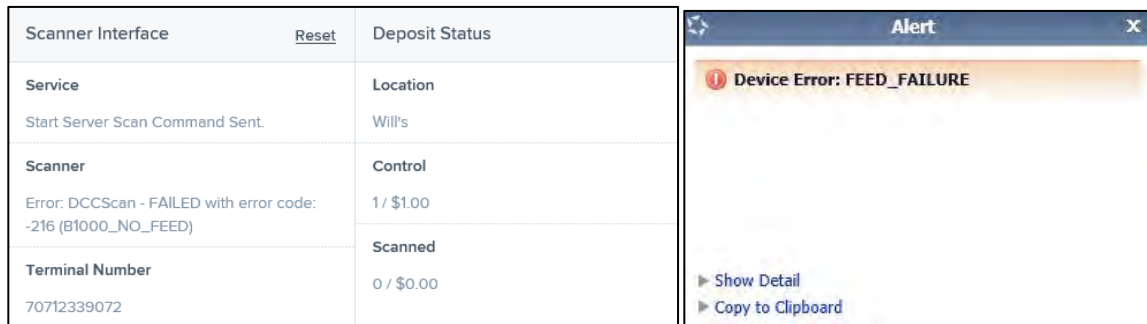


FIGURE 31 - DCC SCANNER ERROR

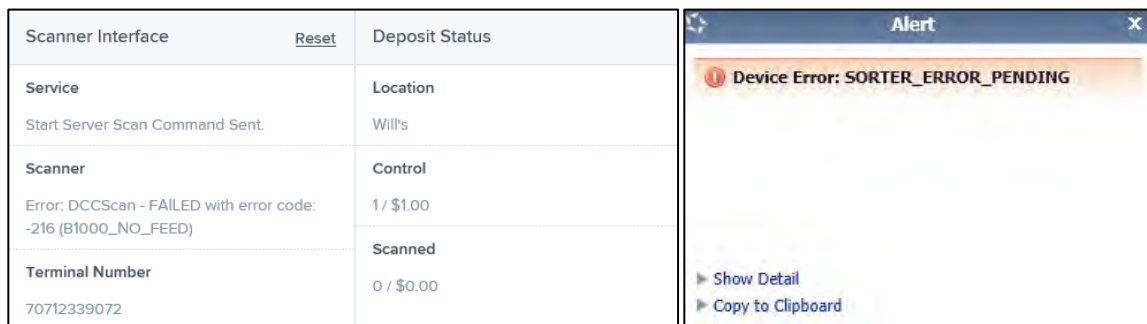


FIGURE 32 - MVX SCANNER ERROR

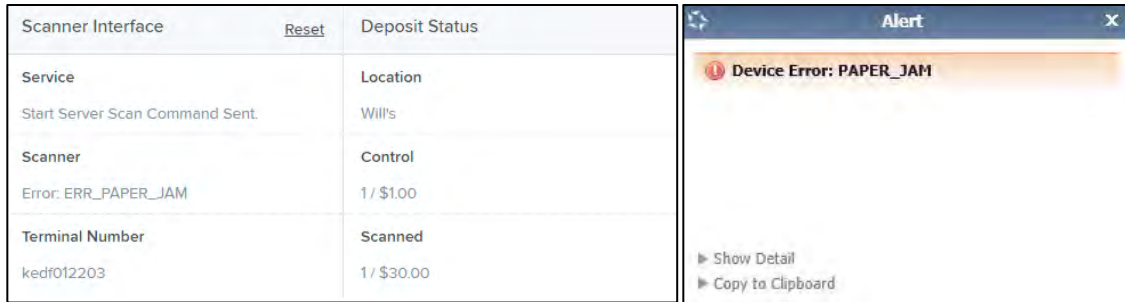


FIGURE 33 - EPSON SCANNER ERROR

“Choose A Device Manufacturer” Prompt Appears Every Time

If Device Control’s Choose A Device Manufacturer window appears every time you begin making a deposit, you may need to make alterations to your Internet browsing history options. Placing the URL in your **favorites will also help to reduce the message frequency**. Navigate to the application, and opt to have this URL saved as one of your favorites.

1. Open an *Internet Explorer* window and select **Tools | Internet Options**.
2. Under the General tab, in the *Browsing history* section, deselect the check box next to **Delete browsing history on exit** so that this option is disabled.

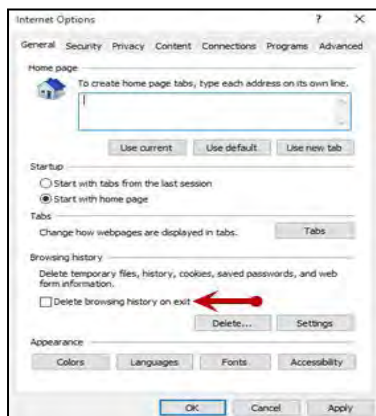


FIGURE 34 - DISABLING THE DELETE BROWSING HISTORY ON EXIT OPTION

3. From the *Browsing history* section, select the **Delete...** option to view the *Delete Browsing History* window.

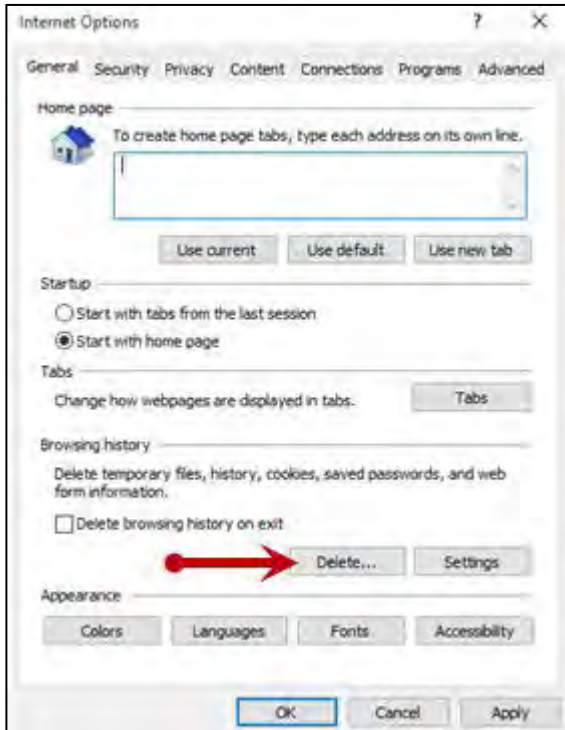


FIGURE 35 - DELETE OPTION

4. The *Delete Browsing History* window appears. Select the check box next to the **Preserve Favorites website data** option, so that this option is enabled.
5. To apply this setting, click the **Delete** option at the bottom of the window. The system will delete any excess browsing history, while preserving the Favorites data.

Communication Error/Failure

If Device Control cannot communicate with the application, you may receive the error message shown below. Before you follow the steps in this section, make sure the scanner device is connected and the power is turned on.



FIGURE 36 - COMMUNICATION FAILURE

NOTE: If the scanner was plugged in before the device drivers were installed, you will need to verify that the scanner appears correctly in the Device Manager. If the scanner displays a yellow question mark or shows under the *Other Devices* category as a USB device, right-click the icon and then choose **Update Driver**.

1. Log out of the application and restart Device Control by using the following steps. In the bottom right corner of your desktop, select to **Show hidden icons**.



FIGURE 37 - SHOW HIDDEN ICONS OPTION

2. Right-click the Device Control icon and select **Exit Application**.

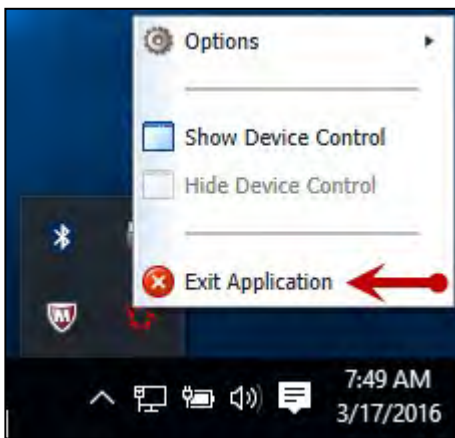


FIGURE 38 - EXIT APPLICATION OPTION

3. Log back into the application and begin to create your deposit. You should be prompted to launch the Device Control once you are on the deposit screen. Once the Device Control is launched, you should be able to scan.
4. If you continue to receive an error, log out of the application, close all instances of Internet Explorer, and restart your computer.
5. Once you have restarted the computer, log in to the application, and try creating the deposit again.

Device Error: SAFETY

If the cover of the scanner has been removed or is not properly in place, Device Control displays an alert message as pictured below, *Device Error: SAFETY*. Please ensure that the cover of the scanner is placed correctly, and then retry your deposit.



FIGURE 39 - DEVICE ERROR: SAFETY

Device Error for Panini VisionX: Compression Error

A compression error occurs when the scanner is not able to compress the image, as shown below.



FIGURE 40 - COMPRESSION ERROR

1. Log out of the application.
2. Unplug the scanner from the computer, and instruct the customer/member to clean the contact image sensors (see figure below).

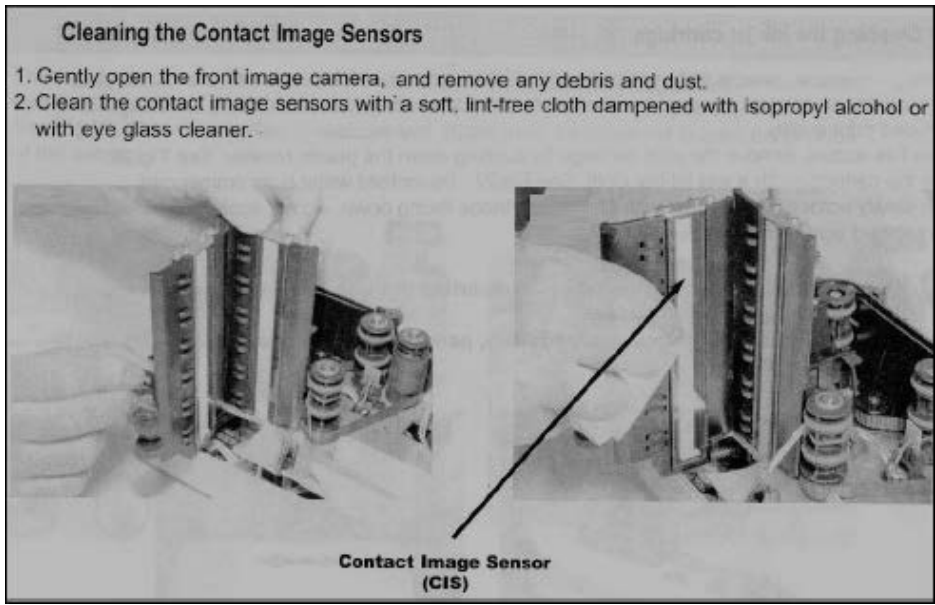


FIGURE 41 - CONTACT IMAGE SENSORS

- a. Gently open the front image camera, and remove any debris and dust.
 - b. Clean the contact image sensors with a soft, lint-free cloth dampened with isopropyl alcohol or with eyeglass cleaner.
3. Reassemble the scanner, and then connect the scanner to the computer.
 4. Log in to the application and continue scanning.

Error Connecting to Device Control

When creating a new deposit, the system may display a service error in the *Scanner Interface* section and be unable to connect to Device Control (see figure below). Reboot your computer, and retry the deposit. If the problem continues, reinstall the EPS Device Control application under the administrator account on the PC.

Scanner Interface	Reset	Deposit Status
Service		Location
Error loading Device Control, retrying...		Will's
Scanner		Control
		1 / \$1.00
Terminal Number		Scanned
		1 / \$30.00

FIGURE 42 - SCANNER INTERFACE ERROR CONNECTING TO DEVICE CONTROL

Images With Horizontal Black Lines

There are a number of potential causes for images that are streaked with horizontal black lines. Implement each of the steps below one at a time in the order presented to resolve the horizontal black lines.

NOTE: If after the completion of one of the solutions below images with horizontal black lines persist, you may opt for the next solution listed. Disconnect the scanner's power and USB cables, and then reboot the computer before attempting the next solution listed.

Installing the latest Panini driver should fix this issue. Following the steps on Page 17 will walk you through uninstalling the old driver and installing the new one. If you are still receiving the black lines then continue with the power options.

Verifying Power Options

1. From your computer's Control Panel, select **Power Options**.

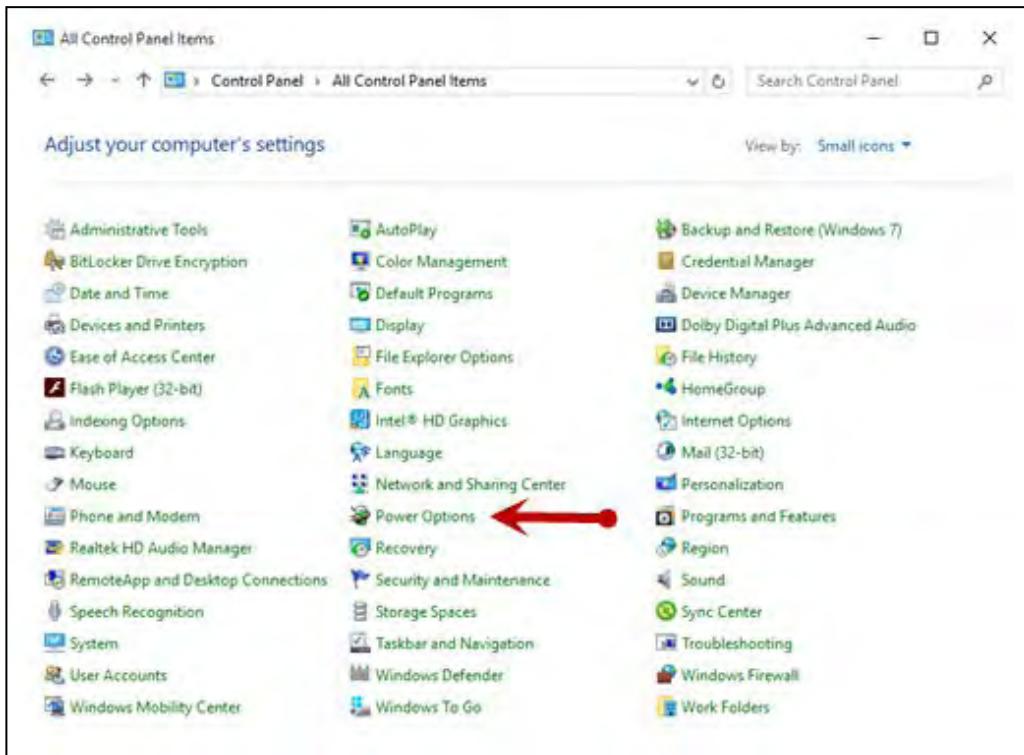


FIGURE 43 – CONTROL PANEL

2. In the *Power Options* window, to the right of your currently active power plan, select **Change Plan Settings**.

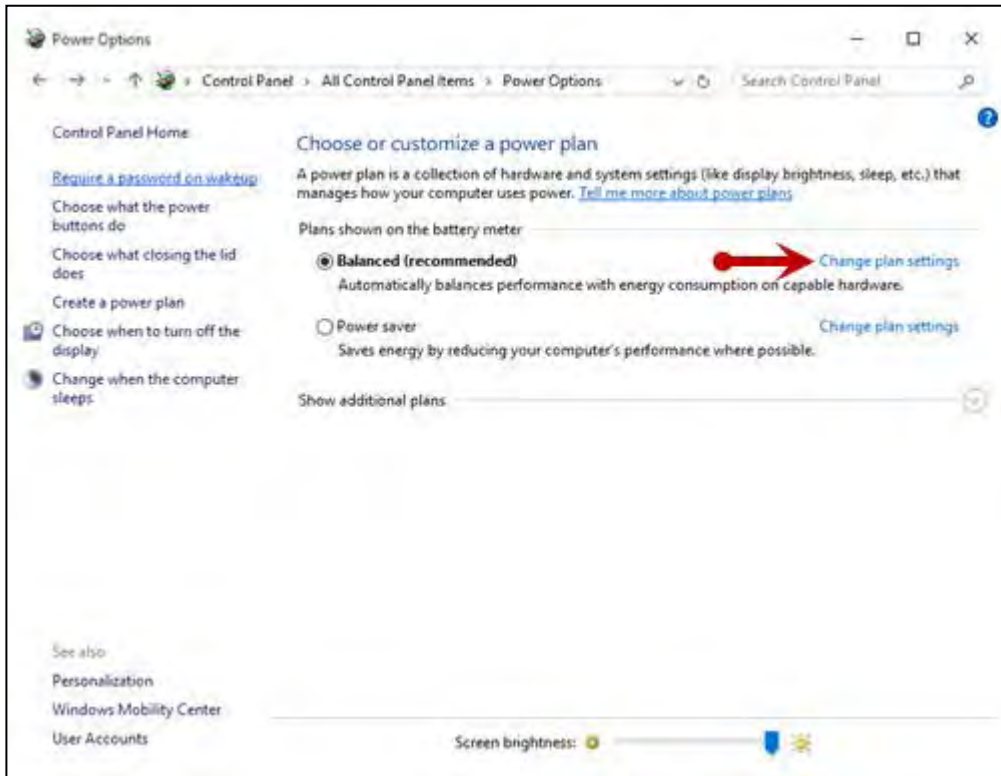


FIGURE 44 – POWER OPTIONS

3. The *Edit Plan Settings* window appears. As depicted in the image below, ensure that the options are set to **Never** for the fields **Turn off the display** and **Put the computer to sleep**.

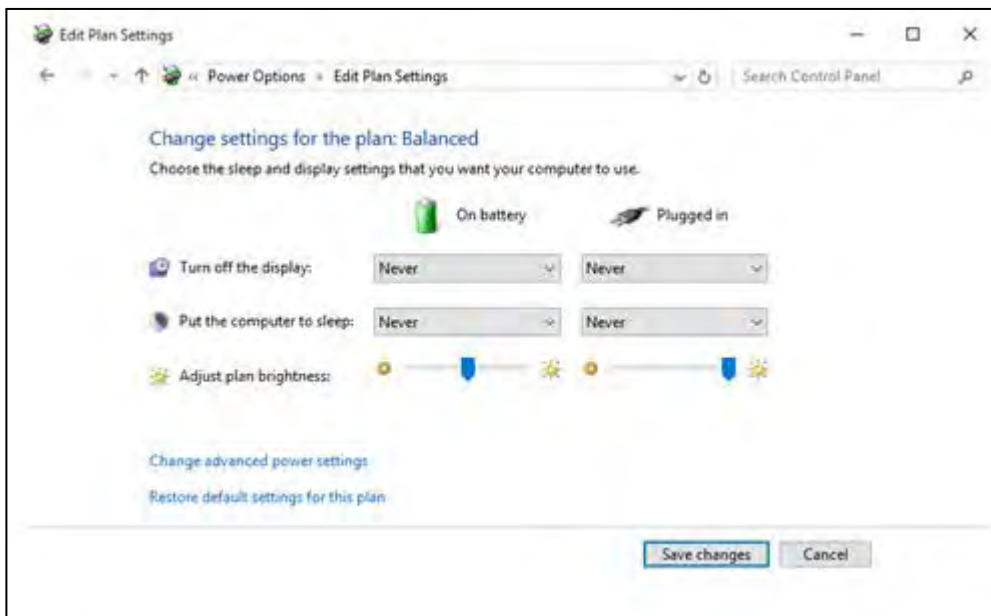


FIGURE 45 – EDIT PLAN SETTINGS SET TO NEVER

4. Navigate back to your Control Panel. From the Control Panel, select **Device Manager** (shown below).

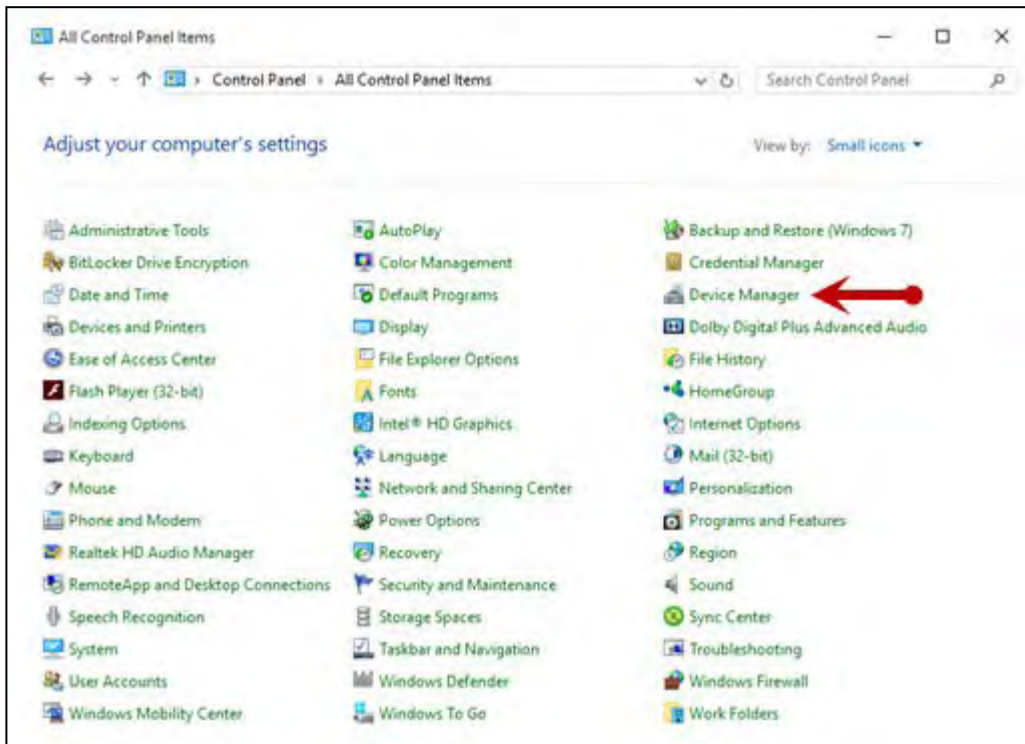


FIGURE 46 - DEVICE MANAGER OPTION

5. From the *Device Manager* window, scroll down to the *Universal Serial Bus Controllers* section.

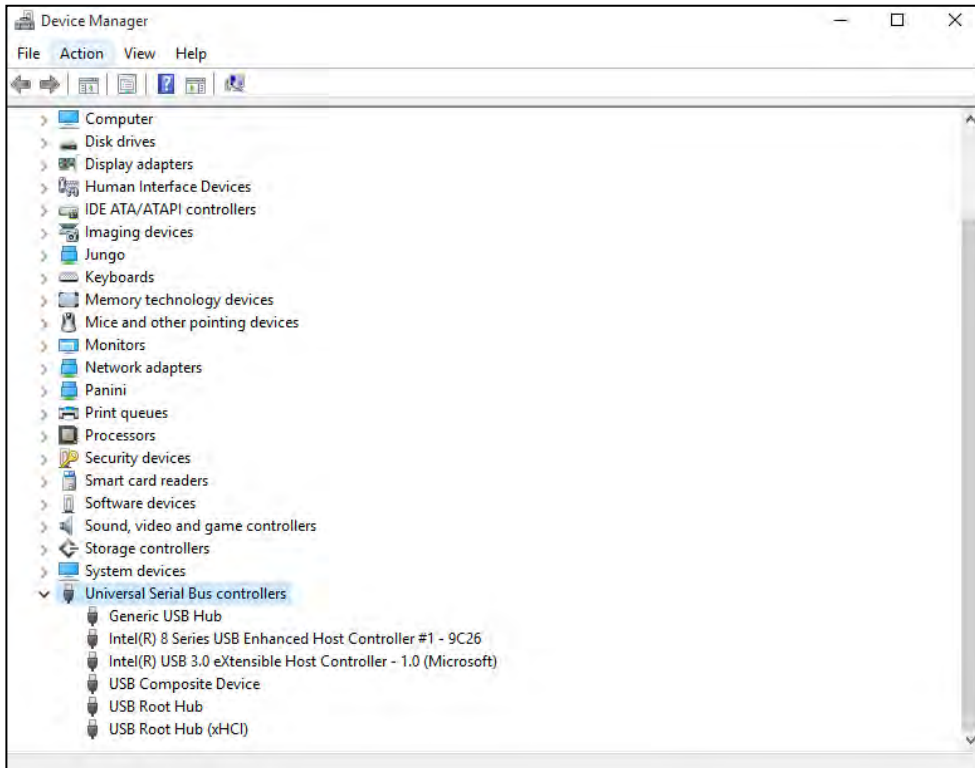


FIGURE 47 - DEVICE MANAGER, USB CONTROLLERS

6. For each instance of a USB connection, right-click the option and then select **Properties**.

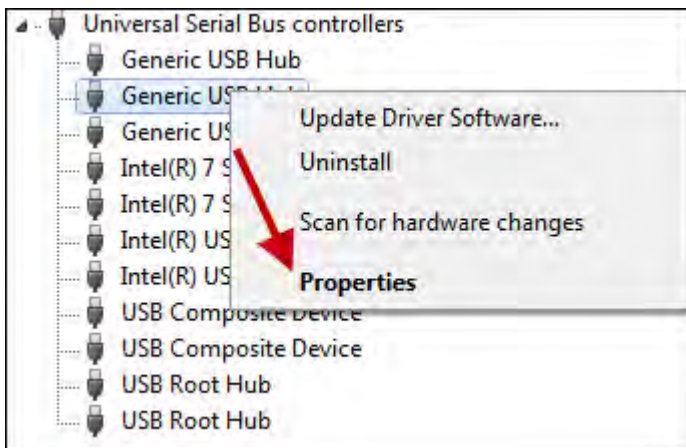


FIGURE 48 - PROPERTIES OPTION FOR USB DEVICE INSTANCE

7. In the *Properties* window, under the *Power Management* tab, make sure the check box next to **Allow the computer to turn off this device to save power** is unchecked—that is, left blank.

NOTE: Ensure this option is unchecked for every instance of a USB within your Device Manager.

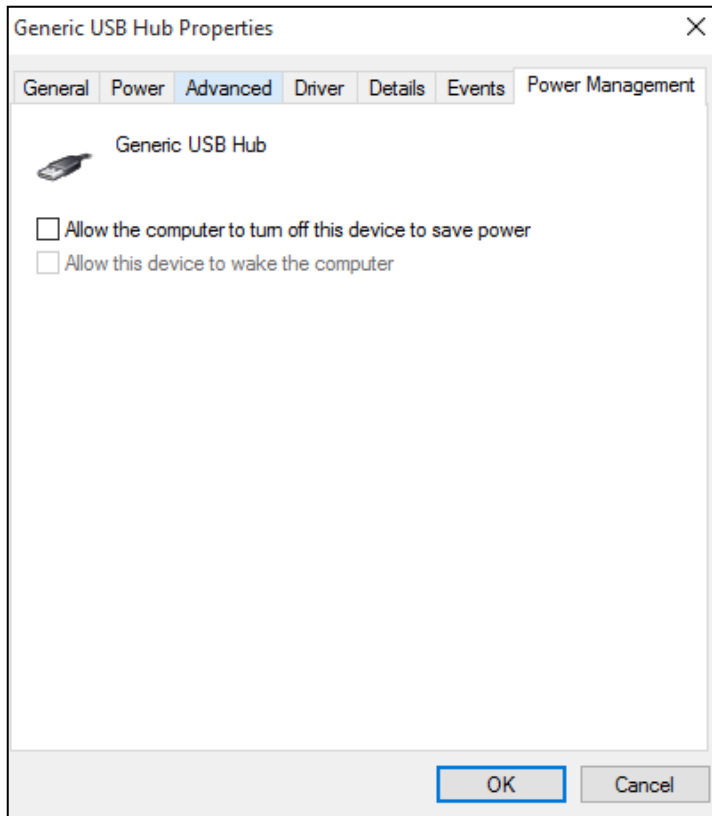


FIGURE 49 - POWER MANAGEMENT FOR USB

Cleaning Image Cameras

Streaks caused by a buildup of ink deposits may develop on the image. If a streak appears on the image and running a cleaning card does not remove it, remove the inner and outer covers of the scanner. Gently remove the front image camera. Using an alcohol-saturated snap swab, wipe the glass on both the front and back cameras (shown below).



FIGURE 50 - WIPING A CAMERA

Electrical Interference

There may be electrical interference from an appliance, such as oscillating fans, a space heater, a CRT-style computer monitor, etc. Move any such appliances at least 18 inches from the scanner.

Poor Electrical Circuit

If there is a poor quality electrical circuit, relocate the scanner's power source to a different electrical outlet.

Degraded USB Controller or Cable

Replace the USB cable. You may also use a powered USB hub for your scanner's USB connection with the computer.

Other USB Devices

Other USB devices connected to your computer, such as a laser printer or a 3-in-1 printer. Turn the power to these types of devices off during scanning, as they sometimes interfere with other USB devices (such as the scanner).

Outdated BIOS/firmware/chipset

Update your computer's firmware. Contact your computer manufacturer for assistance.

Pocket Options for Panini[®] I:Deal[®] (RDS and RDC)

When scanning a check, you have the option of designating whether the check exits the scanner in the front or back of the machine. This option is called the Pocket option.

When making a deposit with RDS, select the drop-down menu next to *Pocket* on the *Check Processing: Remote Deposit Scan* page. Designate **Front** or **Back** for your Panini Ideal scanner.

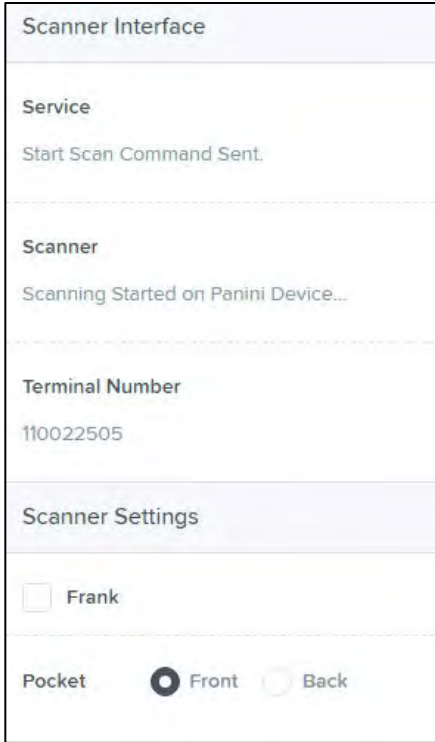


FIGURE 51 - POCKET OPTION IN RDS

When making a deposit with RDC, select the drop-down menu next to *Pocket* on the *Deposit View* page. Designate **Front** or **Back** for your Panini Ideal scanner.

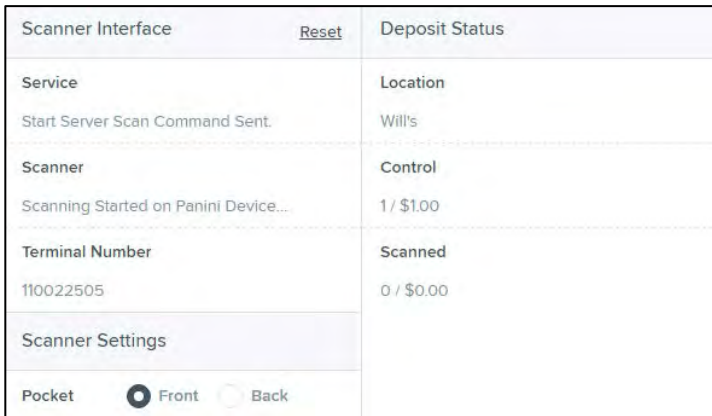


FIGURE 52 - POCKET OPTION IN RDC

“Required supported device list not available” Error

If the scanner type chosen for the merchant in the Partner Portal is not a compatible scanner, Device Control will not launch, and the user will see a *Required supported device list not available* error. You will need to log in to the Partner Portal and add a compatible scanner for the merchant.

Terminal Not Enabled

An error describing a scanner terminal as not enabled may indicate that the scanner has been disabled in the Partner Portal. The scanner will need to be re-enabled for processing to continue.

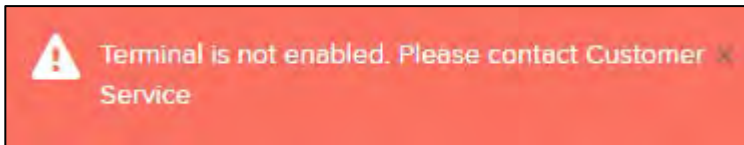


FIGURE 53 - TERMINAL NOT ENABLED ERROR, REMOTE DEPOSIT COMPLETE

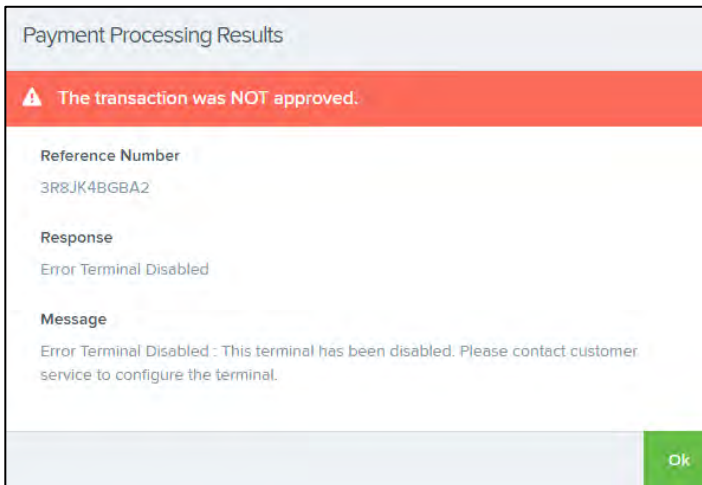


FIGURE 54 - TERMINAL NOT ENABLED ERROR, REMOTE DEPOSIT SCAN

Terminal Not Set Up

If an error describes a terminal as not set up or invalid, the serial number on the scanner has either not been added in the Partner Portal or the serial number was added twice, resulting in two scanners with the same serial number.

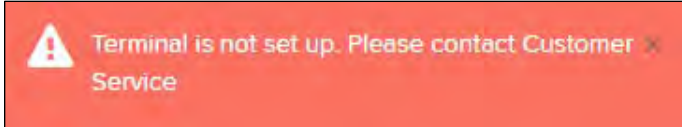


FIGURE 57 - REMOTE DEPOSIT COMPLETE, TERMINAL NOT SET UP

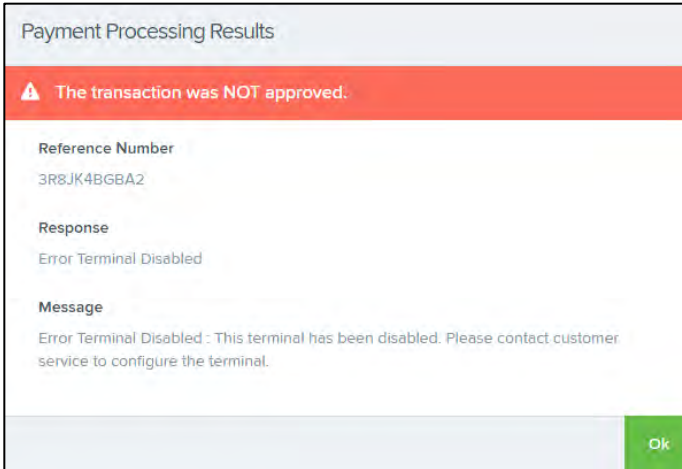


FIGURE 55 - REMOTE DEPOSIT SCAN, TERMINAL INVALID